

Electric Strikes from effeff



Electric Strike 16W
for Outdoor Use



ASSA ABLOY, the global leader
in door opening solutions

effeff's multi-talented outdoor 16W Versatile all-rounder



A host of features for every requirement

The 16W model range is suitable for outdoor use. The FaFix latch and its corresponding striking plates with two fixing positions for the electric strike allow for horizontal adjustment of 4.5 mm. Accessory components such as diverse surface attachments enable the lock latch position to be adapted to almost any installation. Extras such as mechanical unlocking, a hold-open function and monitoring contacts are available as an option.

The strike's multi-voltage ranges between 10-24 V or 22-42 V and, due to its compact dimensions, it can also be installed in smallest spaces.

As a result of its design, the strike's radius keeper is retracted into its casing when opened, instead of moving outwards. This enables the usual cutout for the catch in the frame to be reduced to a minimum; the cut out can even be eliminated if the ProFix version is used.

Standard Electric Strike

Model 16W

Model 16WE



Model 16WRR



Model 16W10, Profix 1



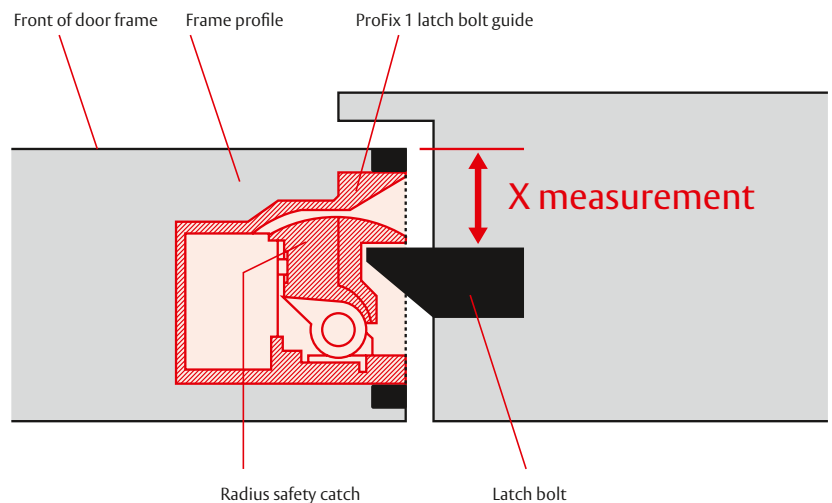
Minimum fitting dimensions and maximum effect with effeff's Electric Strike 16W

With its dimensions of 75 x 20.5 x 28 mm, effeff's Electric Strike 16W is a compact electric strike for outdoor application. Its intelligent features ensure the highest standards in planning reliability as well as quick and easy installation.

Overview of advantages

- Corrosion-resistant surfaces
- Dimensions: 75 x 20.5 x 28 mm
- Striking plates with 2 fixing positions for the electric strike
- Radius keeper, FaFix, adjustable by 2 mm
- Fail-unlocked version available
- Optional monitoring contact, strike dimensions: 83 x 20.5 x 28 mm
IP65 switch with 500mm long connecting cables
- Hold-open function available as an option
- Universal voltage range 10-24 V AC/DC, in continuous operation up to 16 V
- Universal voltage range 22-42 V AC/DC, in continuous operation up to 26 V
- Integrated suppressor diode
- With 300 mm long, integrally cast connecting cable available
→ model 16WK on request
- Dummy component with mechanical override available
- Compatible with all standard mortise locks
- Compatible with anti-thrust bolt locks
- Profix 1 version available
- Endurance rating of 250,000 cycles
- Resistance to forced opening up to 5,000 N
- Symmetric design, so can be used DIN left-hand or right-hand and horizontally

The x measurement refers to the distance between the front of the door frame and the latch bolt or electric strike bolt.



Technical data

Model 16W / 26W / 36W

16W in a striking plate with 2 fixing positions for the electric strike

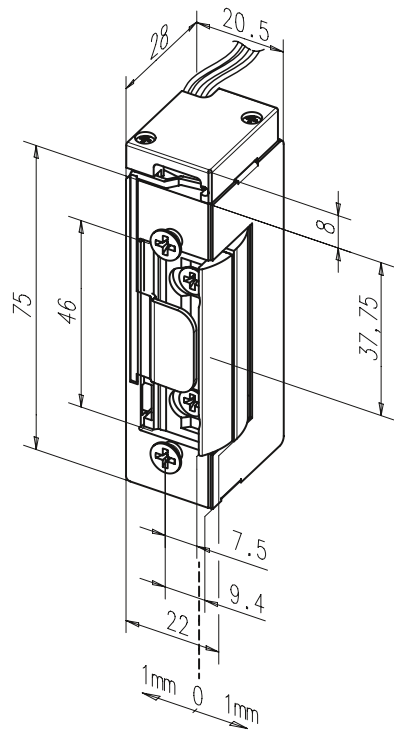


Model 16W is a compact universal electric strike for outdoor use. A high-quality surface finish ensures it is optimally protected against corrosion. The electric coil is fully cast and thus protected against damp and water. Don't forget known extras such as a monitoring contact, hold-open function and actuating lever are possible. Both fail-locked and fail-unlocked modes of operation are available. The model is fitted with a built-in suppressor diode. The universal voltage range makes it easy for you to select the voltage and reduces warehousing. The striking plates with 2 fixing positions for the electric strike extend the FaFix adjustment range by a further 2.5 mm.

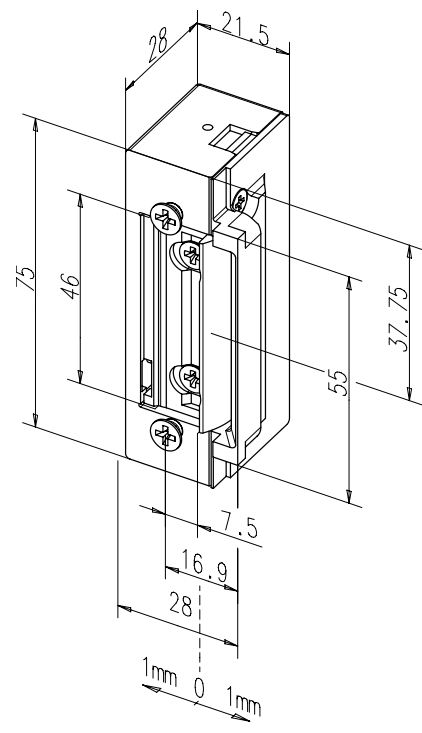
Technical data	
Resistance to forced entry	5000 N
Fitting dimensions (mm detent)	75 x 20,5 x 28 mm
FaFix adjustment range	2 mm
Striking plate adjustment	2,5 mm
Keeping depth of latch	5,5 mm
Voltage range	10 V to 24 V AC/DC Continuous 10-16 V 22 V to 42 V AC/DC Operation 22-26 V
Ambient temperature range	-15 °C to +40 °C
IP65 monitoring contact	optional
Switching capacity for monitoring contact	24 V / 1 A
Installation dimensions with monitoring contact	82 x 20,5 x 28 mm
Works in all fitting positions	yes
Diode	integrated
Suitable for fire doors	no
Cycles factory tested	250.000
Corrosion test as per DIN 50021SS	432 hours

Electrical Specifications for Model 16W at 20° C	A71 10-24 V	B71 22-42 V	E91 12 V	F91 24 V
Rated operational voltage tolerance	—	—	+/- 10 %	+/- 10 %
Rated resistance	43 Ohm	200 Ohm	51 Ohm	160 Ohm
Max. rated power input				
12 V DC	280 mA	—	235 mA	—
24 V DC	560 mA	120 mA	—	150 mA
12 V AC	250 mA	—	—	—
24 V AC	500 mA	60 mA	—	—
Preload unlocking				
Preload AC operation	160 N	160 N	—	—
Preload DC operation	35 N	35 N	20 N	20 N

Dimensional drawings



**Model 16WRR
with monitoring**



Model 16W.10 ProFix 1

Overview of most common models

Electric Strikes 16W, 26W, 36W

Order codes	10-24V AC/DC	22-42V AC/DC	Fail- locked	Fail- unlocked	12V DC	24V DC	Unlocking lever	Suppressor diode	Monitoring contact	Hold-open function	FAFIX +1/-1mm
16W-----A71	•		•					•			•
16W-----B71		•	•					•			•
16WE-----A71	•		•				•	•			•
16WE-----B71		•	•				•	•			•
16WRR-----A71	•		•					•	•		•
16WRR-----B71		•	•					•	•		•
16WRRE-----A71	•		•				•	•	•		•
16WRRE-----B71		•	•				•	•	•		•
26W-----A71	•		•					•		•	•
26W-----B71		•	•					•		•	•
26WE-----A71	•		•				•	•		•	•
26WE-----B71		•	•				•	•		•	•
36W-----E91				•	•			•			•
36W-----F91				•		•		•			•
36WRR-----E91				•	•			•	•		•
36WRR-----F91				•		•		•	•		•

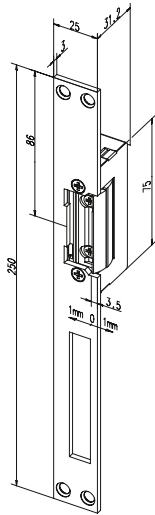
Note: Other combinations possible, e.g. 16WE with surface attachment 116.340 = 16WE340-----A71

Overview of most common models

Electric Strikes 16W, 26W, 36W in ProFix 1 version

Order codes	10-24V AC/DC	22-42V AC/DC	Fail- locked	Fail- unlocked	12V DC	24V DC	Unlocking lever	Suppressor diode	Monitoring contact	Hold-open function	FAFIX +1/-1mm
16W.10-----A71	•		•					•			•
16W.10-----B71		•	•					•			•
16WE.10-----A71	•		•				•	•			•
16WE.10-----B71		•	•				•	•			•
16W.20-----A71	•		•					•	•		•
16W.20-----B71		•	•					•	•		•
16WE.20-----A71	•		•				•	•	•		•
16WE.20-----B71		•	•				•	•	•		•
26W.10-----A71	•		•					•		•	•
26W.10-----B71		•	•					•		•	•
26WE10-----A71	•		•				•	•		•	•
26WE.10-----B71		•	•				•	•		•	•
36W.10-----E91				•	•			•			•
36W.10-----F91				•		•		•			•
36W.20-----E91				•	•			•	•		•
36W.20-----F91				•		•		•	•		•

Standard combinations for fail-locked version of 16W



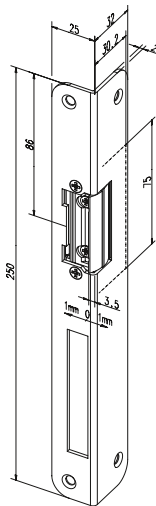
Electric strike 16W with flat striking plate 021 with dead bolt cut-out

Technical data	
Colour	35
Type	HZ

DIN door swing direction	
Universal	1

Voltage	
10-24 V AC/DC	A7
22-42 V AC/DC	B7

Order code		
16W----	02135	** 1



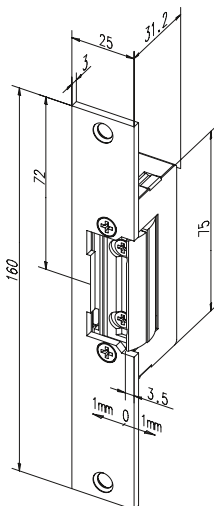
Electric strike 16W with angled striking plate 324 with dead bolt cut-out

Technical data	
Colour	35
Type	iW

DIN door swing direction	
Left-hand	4
Right-hand	5

Voltage	
10-24 V AC/DC	A7
22-42 V AC/DC	B7

Order code		
16W----	32435	** *



Electric strike 16W with short flat striking plate 120

Technical data	
Colour	35
Type	kl

DIN door swing direction	
Universal	1

Voltage	
10-24 V AC/DC	A7
22-42 V AC/DC	B7

Order code		
16W----	12035	** 1

Note: Combinations with flat striking plates are always supplied as a DIN left-hand fitting. They can be converted to DIN right-hand on site.

General technical information for model series 16W

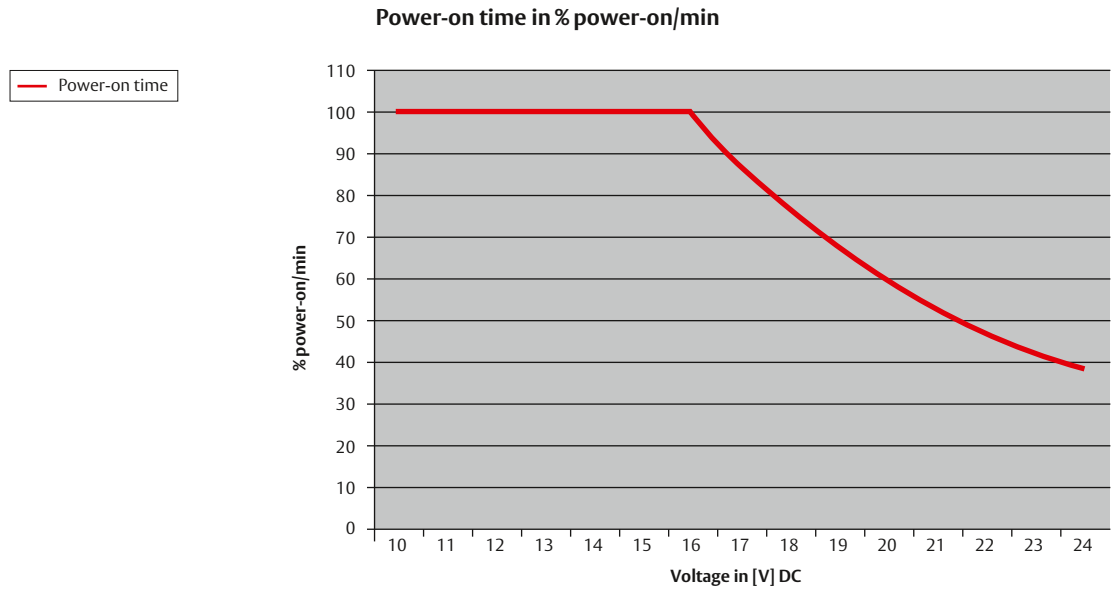


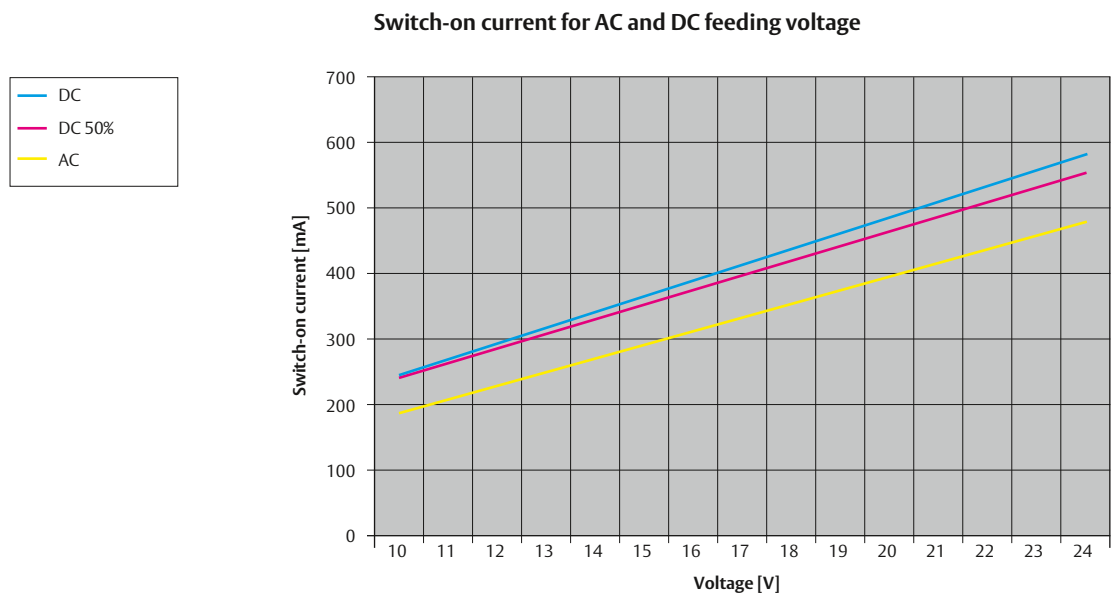
Diagram shows relative power-on time for A71 models (10-24 V AC/DC)

Example

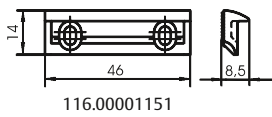
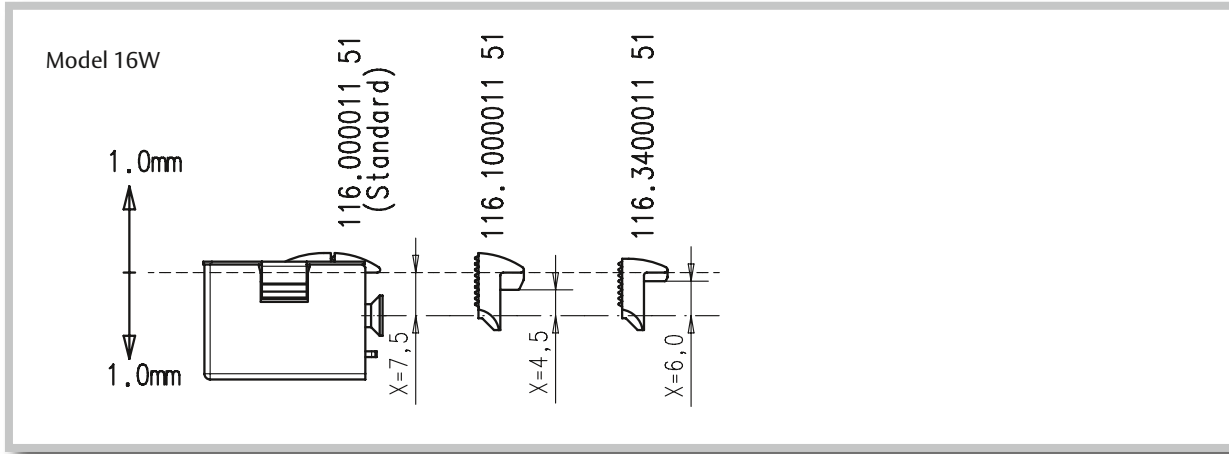
100 % power-on time is guaranteed up to a voltage of 16 V. This means the electric strike can be continually energised without overheating.

If Electric Strike 16W-----A71 is operated at 24 V, the power-on time is reduced to 40 %. This corresponds to a maximum pulse frequency of 24 seconds continual energising followed by a break of 36 seconds. The electric strike can then be energised again for 24 seconds. Switch-on currents can be taken from the graph below. Alternating current (AC) operation requires lower switch-on currents than direct current (DC) operation.

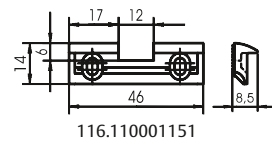
"DC 50 %" is a direct current with 50 % ripple.



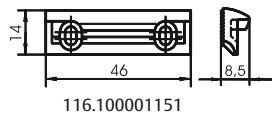
Surface attachments for models 16W, 26W and 36W



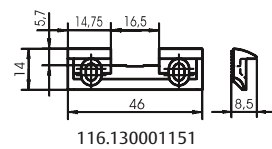
x = 7,5 ± 1 mm



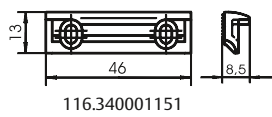
x = 6,5 ± 1 mm



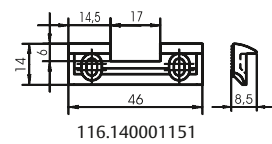
x = 4,5 ± 1 mm



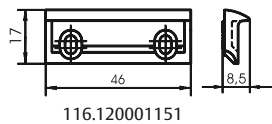
x = 7,5 ± 1 mm



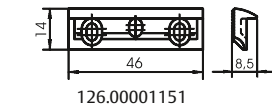
x = 6,0 ± 1 mm



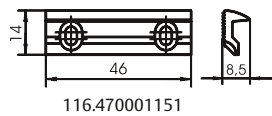
x = 7,5 ± 1 mm



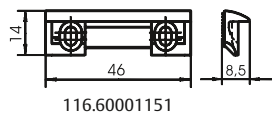
x = 9,5 ± 1 mm



x = 7,5 ± 1 mm



x = 6,5 ± 1 mm



x = 6,5 ± 1 mm

Installation sizes – Comparison between 16W and 12WD

Model 16W with striking plate 19B

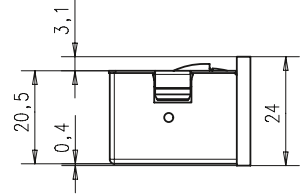
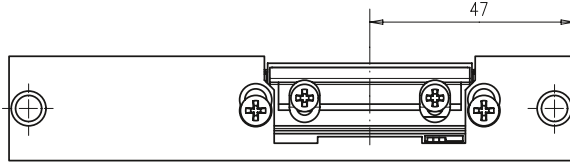
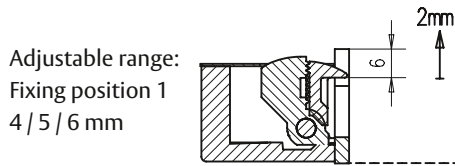
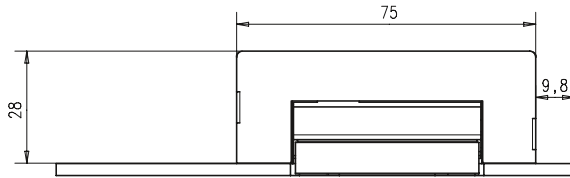
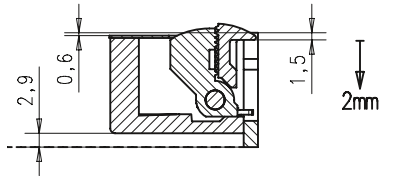


Diagram shows fixing position 1

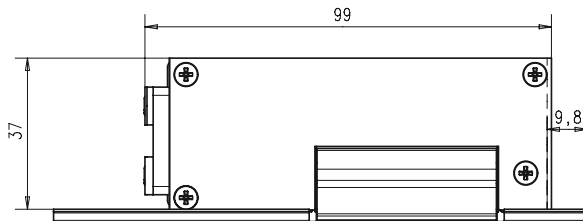
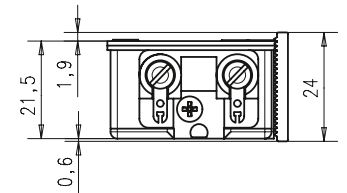
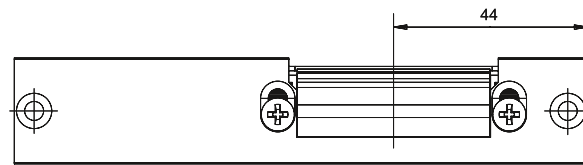


Adjustable range:
Fixing position 1
4 / 5 / 6 mm

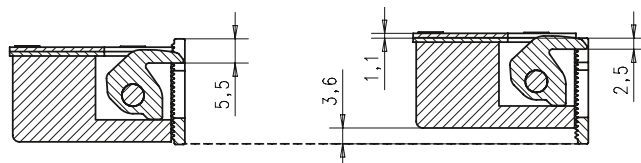
Adjustable range:
Fixing position 2
1.5 / 2.5 / 3.5 mm



Model 12WD with Fix striking plate no. 152



Adjustable Fix range:
2.5 / 3.5 / 4.5 / 5.5 mm



Comparison list between 12WD and 16W

Model 12WD will be replaced by Model 16W as of January 2010.
This comparison list will help you to find the right model in the 16W series.

Article No.	Alternative article no.
12-----29302E54	16W----29302A74
12-----29302E55	16W----29302A75
12EF-----D 14	16WE-----A71
12EF-----D 15	
12EF---05035D14	16WE---18B35A71
12EF---05035D15	
12EF---05035R14	16WE---18B35A71
12EF---05035R15	
12EF---05040D14	16WE--18B35A71
12EF---05040D15	
12F-----D 14	16W-----A71
12F-----D 15	
12F-----E34	
12F-----E35	
12F-----F34	16W-----B71
12F-----F35	
12F-----R 14	16W-----A71
12F-----R 15	
12F----05135D14	16W---18B35A71
12F----05135D15	
12F----05135E34	
12F----05135E35	
12F----05135R14	16W---18B35B71
12F----05135R15	
12F----05140D14	16W---18B35A71
12F----05140D15	
12F----05140E34	
12F----05140E35	
12F----05140R14	16W---18B35A71
12F----05140R15	
12F----15240E34	16W---19B35A71
12F----15240E35	
12F----31835E34	16W---23B35A71
12F----31835E35	
12F----31835F14	
12F----31835F15	

Article No.	Alternative article no.
12F----31835F34	16W---23B35B71
12F----31835F35	
12F----31835R14	
12F----31835R15	
12RRF-----F34	16WRR-----B71
12RRF-----F35	
12RRF--05140F34	16WRR--18B35B71
12RRF--05140F35	
1205F-----E34	16W-----A71
1205F-----E35	
1205F--05140E34	16W----18B35A71
1205F--05140E35	
1205F--31835E34	16W----23B35A71
1205F--31835E35	
1205F--31835F34	16W----23B35A71
1205F--31835F35	
22EF-----D 14	26WE-----A71
22EF-----D 15	
22EF---05035D14	26WE--18B35A71
22EF---05035D15	
22EF---05040D14	26WE--18B35A71
22EF---05040D15	
22EF---05040E34	
22EF---05040E35	
32F-----E94	36W-----E91
32F-----E95	
32F-----F94	36W-----F91
32F-----F95	
32F---05135E94	36W----18B35E91
32F---05135E95	
32F---05135F94	36W----18B35F91
32F---05135F95	
32F---05140E94	36W----18B35E91
32F---05140E95	
32F---05140F94	36W----18B35F91
32F---05140F95	
32RRF-----E94	36WRR-----E91
32RRF-----E95	
32RRF-----F94	36WRR-----F91
32RRF-----F95	

We will continue to meet the demand for technical advances and innovations in the future and therefore we reserve the right to make modifications to designs. Photos and diagrams may thus vary from the actual product you receive. Although the utmost care is taken, there may be printing errors or mistakes in this brochure. effeff accepts no responsibility in such cases and will not enter into any obligations of any kind. No responsibility is taken for the correctness of any safety regulations reproduced here.

ASSA ABLOY is the global leader in door opening solutions, dedicated to satisfying end-user needs for security, safety and convenience.



ASSA ABLOY



Originally part of the ZEISS IKON AG company founded in 1926, **IKON** is ASSA ABLOY's most successful brand for locking and security technology in Germany. The IKON brand offers state-of-the-art products and solutions at the cutting edge of technology. The brand product range includes high-quality mechanical and mechatronic locking cylinders, auxiliary locks and security devices, door fittings and door closers. They provide active burglary protection and safeguard both people and property.



Founded as a precision engineering and electrical engineering workshop in 1936, **effeff** is a global leading brand for electromechanical locking and unlocking devices.

Electric strikes, electric bolts, security locks, access control systems and escape route technology are among the effeff brand products which today provide security and convenience in over 75 countries throughout the world.

ASSA ABLOY Sicherheitstechnik GmbH is the professional partner worldwide in mechanical and electromechanical security solutions for safety, security and convenience in buildings. The company develops, produces and markets high-quality products and multi-purpose systems under the established IKON and effeff brand names for the private, commercial and public sectors.

ASSA ABLOY is the world's leading manufacturer and supplier of door opening solutions, meeting tough enduser demands for safety, security and convenience. With over 32,000 employees, the Group achieves sales of over EUR 3 billion.

ASSA ABLOY
Sicherheitstechnik GmbH
Bildstockstraße 20
72458 Albstadt
GERMANY
albstadt@assaabloy.de
Tel. +497431 123-0
Fax +497431 123-240
www.assaabloy.de