



### Holding Magnets

The comprehensive range of effeff magnets covers all types of application. Whether for mounting on the wall or the floor with appropriate spacers – effeff is your competent partner, world wide.

Use of door closers with integrated arrester devices instead of magnets is permissible only when they have system approval.

### Magnets with Diodes

Magnets for integration in fire alarm systems and other electrical systems can be supplied with a built-in recovery and polarity reversal protection diode.

Order supplement ... with diode

### Magnets and Counter Holding Plates

Are made of special magnetic soft iron. This ensures optimum adhesion with low power consumption and slight residual adhesion.

Magnets and counter holding plates must therefore always be ordered together.

The surfaces of the magnets and counter holding plates are nickel plated.

The magnets may be combined with mounting housings and spacers.

### Ease of Mounting

The counter holding plates are always larger in diameter than the corresponding magnets. This makes it easier to adjust to the magnet when mounting the counter holding plate, because the excess size of the plate takes the mounting tolerances into account.

Example of wall mounting



Model 838-2



Model 838-2 Model 838 A with mounting plate and covered connecting terminal

Example of floor mounting



Model 838-2



Model 838/839 BW I Spacer



Model 838-2



838/839 BW 2U

Heavy Duty Version



Model 838-2



Model 838 iGW in cast aluminium housing



Model 838-2



Model 838 iGB in cast aluminium housing

## Magnets

### Version A

With mounting plate and concealed connection terminal.

### Version BC

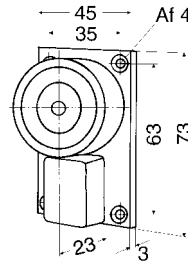
Cable connection changeable to side or back.

Back connection with 2 M5 screws for spacer or building-side holder.

### Series 837

Holding force 300 N

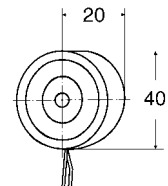
Model 837 A



Order No.

**837A-----F90**

Model 837 BC



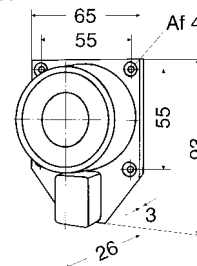
Order No.

**837BC-----F90**

### Series 838

Holding force 800 N

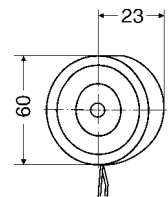
Model 838 A



Order No.

**838A-----F90**

Model 838 BC



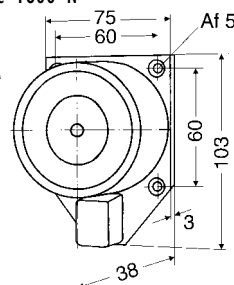
Order No.

**838BC-----F90**

### Series 858

Holding force 1800 N

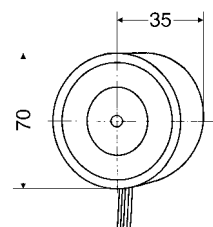
Model 858 A



Order No.

**858A-----F90**

Model 858 BC



Order No.

**858BC-----F90**

### Technical data

	Model 837...	Model 838...	Model 858...
Operating voltage	24 V DC		
Nominal current consumption	approx. 0,075 A (typically)	approx. 0,09 A (typically)	approx. 0,25 A (typically)
Nominal power consumption	approx. 1,8 W (typically)	approx. 2,1 W (typically)	approx. 6 W (typically)
Switch-on time	100 % ED		
Operating temperature range	0°C to +50°C		
Operating temperature at 20°C	approx. 45°C	approx. 45°C	approx. 45°C
Degree of protection	IP 40 (acc. to DIN EN 60 529, 2000-09)		
Nominal holding force	up to 300 N	up to 800 N	up to 1800 N
DIBt approval	Z 6.5-430		
Dimensions	Vary with version		

**Magnets**

**Version iS**

Wall-mounting version in plastic housing

**Version iGW**

In aluminium housing for wall mounting

**Version iGB**

In aluminium housing for floor mounting

**Version .../U**

With cut out switch

Model 838 iS without cut out switch

Order No.

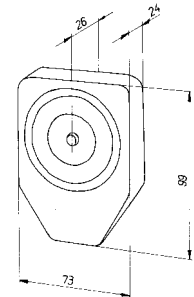
**838iS-----F90**

Model 838 iS/U with cut out switch

Order No.

**838iS/U-----F90**

Holding force 800 N



Model 838 iGW without cut out switch

Order No.

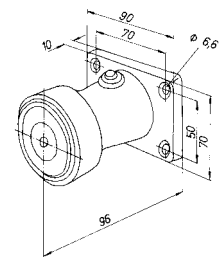
**838iGW-----F90**

Model 838 iGW/U with cut out switch

Order No.

**838iGW/U----F90**

Holding force 800 N



Model 838 iGB without cut out switch

Order No.

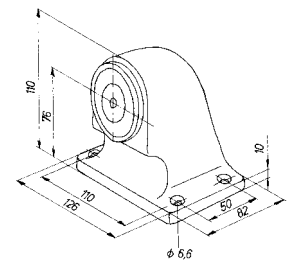
**838iGB-----F90**

Model 838 iGB/U with cut out switch

Order No.

**838iGB/U----F90**

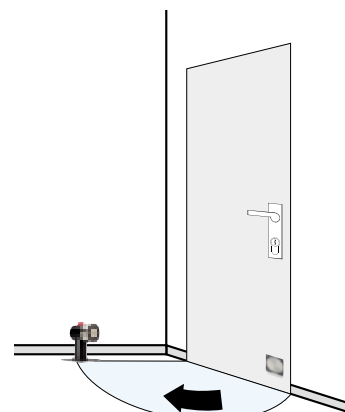
Holding force 800 N



Always mount the arrester devices at the point at which the force of the door closer is applied. This prevents warping of the door leaf.



The door closer takes effect at the top, so mount the arrester unit at the top.



The door closer takes effect at the bottom, so mount the arrester unit at the bottom.

## Magnets

### Spacer 839

Convertible for floor or wall mounting.  
Always order the desired model of magnet and spacer 839... together.

## Spacers for Floor and Wall Mounting of Magnets

Model 837/839  
without cut out switch

Order No.

**837/839-----F90**

Model 837/839 U  
with cut out switch

Order No.

**837/839U----F90**

#### Dimensions

Distance from wall	95 mm
Distance from floor	60 mm
Holding force	300 N

Model 838/839  
without cut out switch

Order No.

**838/839-----F90**

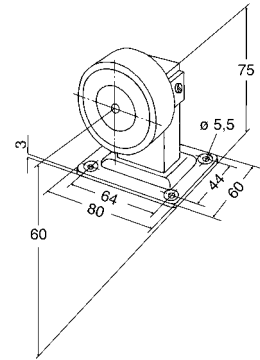
Model 838/839 U  
with cut out switch

Order No.

**838/839U----F90**

#### Dimensions

Distance from wall	98 mm
Distance from floor	60 mm
Holding force	800 N



838/839

### Spacer 839 BW...

The 839 BW... spacers can be modified for floor or wall mounting.  
Spacer tube for mounting the magnet is available in 4 standard lengths.  
Always order the desired model of magnet and spacer 839 BW... together.

Model 838/839 BW I  
without cut out switch

Order No.

**838/839BWI--F90**

Model 838/839 BW I U  
with cut out switch

Order No.

**838/839BWIU-F90**

#### Dimensions

Distance from wall	115 mm
Distance from floor	70 mm
Holding force	800 N

Model 858/839 BW I  
without cut out switch

Order No.

**858/839BWI--F90**

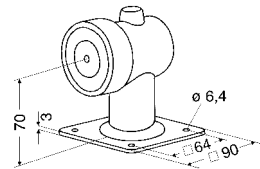
Model 858/839 BW I U  
with cut out switch

Order No.

**858/839BWIU-F90**

#### Dimensions

Distance from wall	127 mm
Distance from floor	70 mm
Holding force	1800 N



838/839 BW I U

### Version .../U

with cut out switch

### Version BW

Convertible for floor or wall mounting

Convertible for floor or wall mounting



Model 838/839 ...

... BW1U-F90

... BW2U-F90

... BW3U-F90

... BW4U-F90

Model 838/839 BW 2  
without cut out switch

Order No.

**838/839BW2--F90**

Model 838/839 BW 2 U  
with cut out switch

Order No.

**838/839BW2U-F90**

**Dimensions**

Distance from wall 155 mm  
Distance from floor 110 mm  
Holding force 800 N

Model 858/839 BW 2  
without cut out switch

Order No.

**858/839BW2--F90**

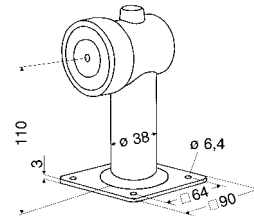
Model 858/839 BW 2 U  
with cut out switch

Order No.

**858/839BW2U-F90**

**Dimensions**

Distance from wall 167 mm  
Distance from floor 110 mm  
Holding force 1800 N



838/839 BW 2 U

Model 838/839 BW 3  
without cut out switch

Order No.

**838/839BW3--F90**

Model 838/839 BW 3 U  
with cut out switch

Order No.

**838/839BW3U-F90**

**Dimensions**

Distance from wall 265 mm  
Distance from floor 220 mm  
Holding force 800 N

Model 858/839 BW 3  
without cut out switch

Order No.

**858/839BW3--F90**

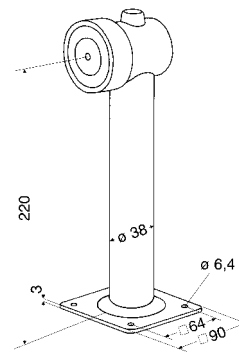
Model 858/839 BW 3 U  
with cut out switch

Order No.

**858/839BW3U-F90**

**Dimensions**

Distance from wall 277 mm  
Distance from floor 220 mm  
Holding force 1800 N



838/839 BW 3 U

Model 838/839 BW 4  
without cut out switch

Order No.

**838/839BW4--F90**

Model 838/839 BW 4 U  
with cut out switch

Order No.

**838/839BW4U-F90**

**Dimensions**

Distance from wall 395 mm  
Distance from floor 350 mm  
Holding force 800 N

Model 858/839 BW 4  
without cut out switch

Order No.

**858/839BW4--F90**

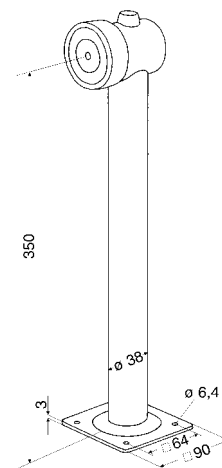
Model 858/839 BW 4 U  
with cut out switch

Order No.

**858/839BW4U-F90**

**Dimensions**

Distance from wall 407 mm  
Distance from floor 350 mm  
Holding force 1800 N



838/839 BW 4 U

Magnet Mating Plates

Mounting plate with articulated magnet counter holding plate

Model 837-2

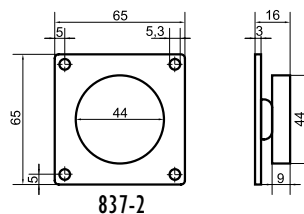
Order No. **837-2-----00**

Model 838-2

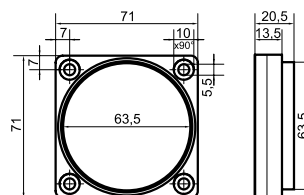
Order No. **838-2-----00**

Model 858-2

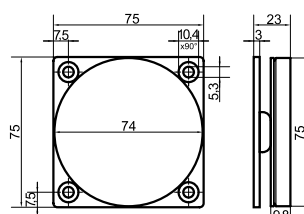
Order No. **858-2-----00**



837-2



838-2



858-2

Counter holding plate on mounting fixture with cushioning spring, softening the impact of heavy doors

Model 837-2P

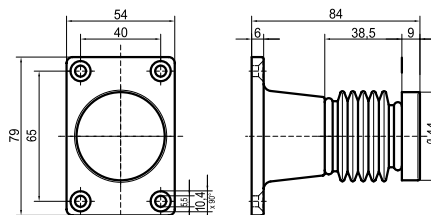
Order No. **837-2P-----00**

Model 838-2P

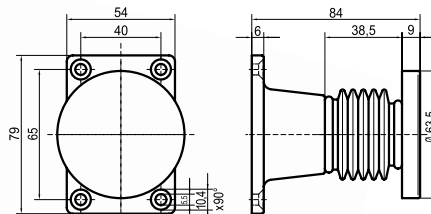
Order No. **838-2P-----00**

Model 858-2P

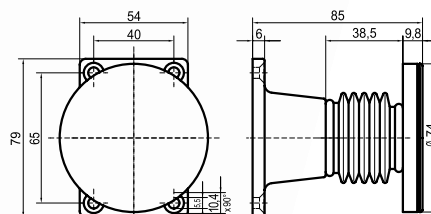
Order No. **858-2P-----00**



837-2P



838-2P



858-2P

Magnet mating plates on mounting plate, adjustable for extreme angles between door and magnet

Model 837-3

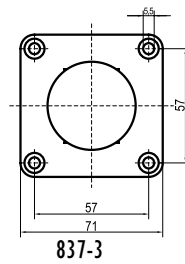
Order No. **837-3-----00**

Model 838-3

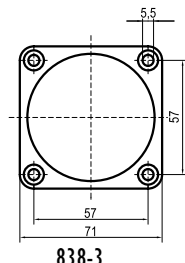
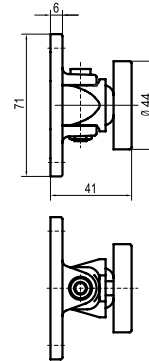
Order No. **838-3-----00**

Model 858-3

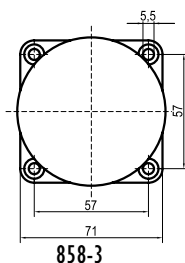
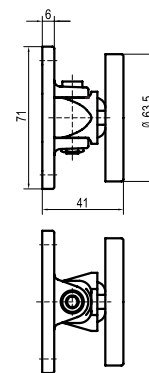
Order No. **858-3-----00**



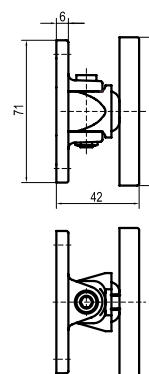
837-3



838-3



858-3



#### Note!

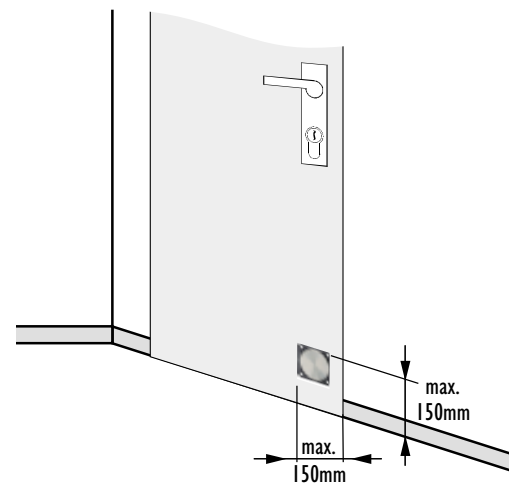
Fire barriers must be able to withstand fires.

You must not drill holes in them, and you must use only attachment material with a melting point of above 1000°C.

Attach the magnet counter holding plates on steel doors only with steel M5 riveted nuts and steel screws.

With wooden doors, use steel woodscrews. The screws must not penetrate the wood any farther than  $\frac{3}{4}$  of the thickness of the door leaf.

Mount the magnet counter holding plates on the door leaf so that the attachment screws are not more than 150 mm from the upper or lower edge and from the vertical edge on the side on which the lock is (see illustration on the right).



Max. distances for mounting the magnet mating plate