

Single Bearing Block E

Accessories for Door Interlocks



Function and Range of Application

The single bearing block is used for the external actuation of door interlocks at elevators. It is equipped with an additional emergency release. The connecting rod between the single bearing block and door interlock can be any length. In confined places, a shortened version of the single bearing block is available.

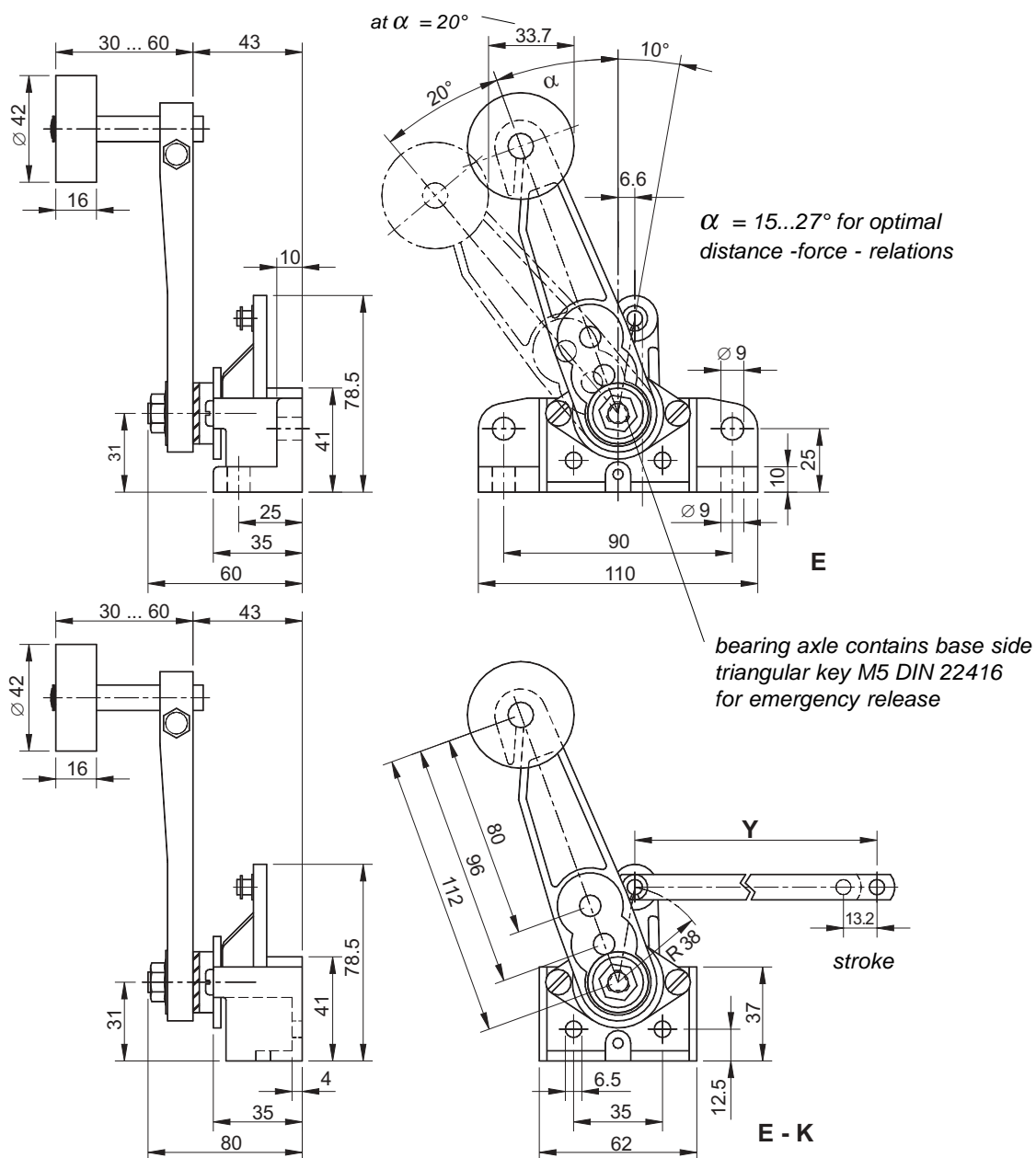
Features

- aluminium die-cast assembly with high stability
- base side emergency release by a standardized triangular key
- precise bearing of the roller lever and the rubber roller
- bearings do not deflect even after exaggerated usage
- permanent lubrication with highgrade lubricants

Order Information Codes

E	single bearing block .11
E - K	single bearing block .11 shortened
Y	connecting rod
Y long	connecting rod from 500 mm length on

Device Dimensions



Technical Data

assembly	aluminium die-cast
customary position	any customary position
ambient air temperature	-30 °C to 80 °C
actuation torque	2.28 Nm at DLF 1; 3.04 Nm at DLF 2
weight	346 g or 288 g (E - K)