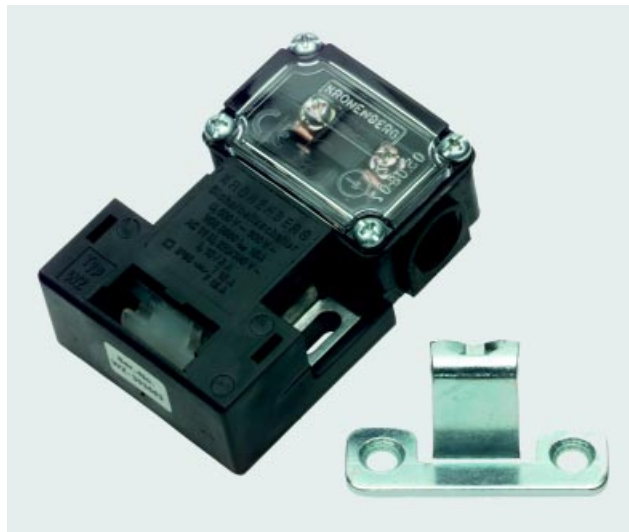


Safety Switch WZ

especially robust version



Function and Range of Application

The water-protected safety switch WZ is a safety switch with positive contact and is used to control the close position of elevator doors. It is very robust and therefore especially suited for elevator doors. The actuator is mounted on the door panel. If the actuator is pulled off of the switch a forced opening of the contact takes place.

Features

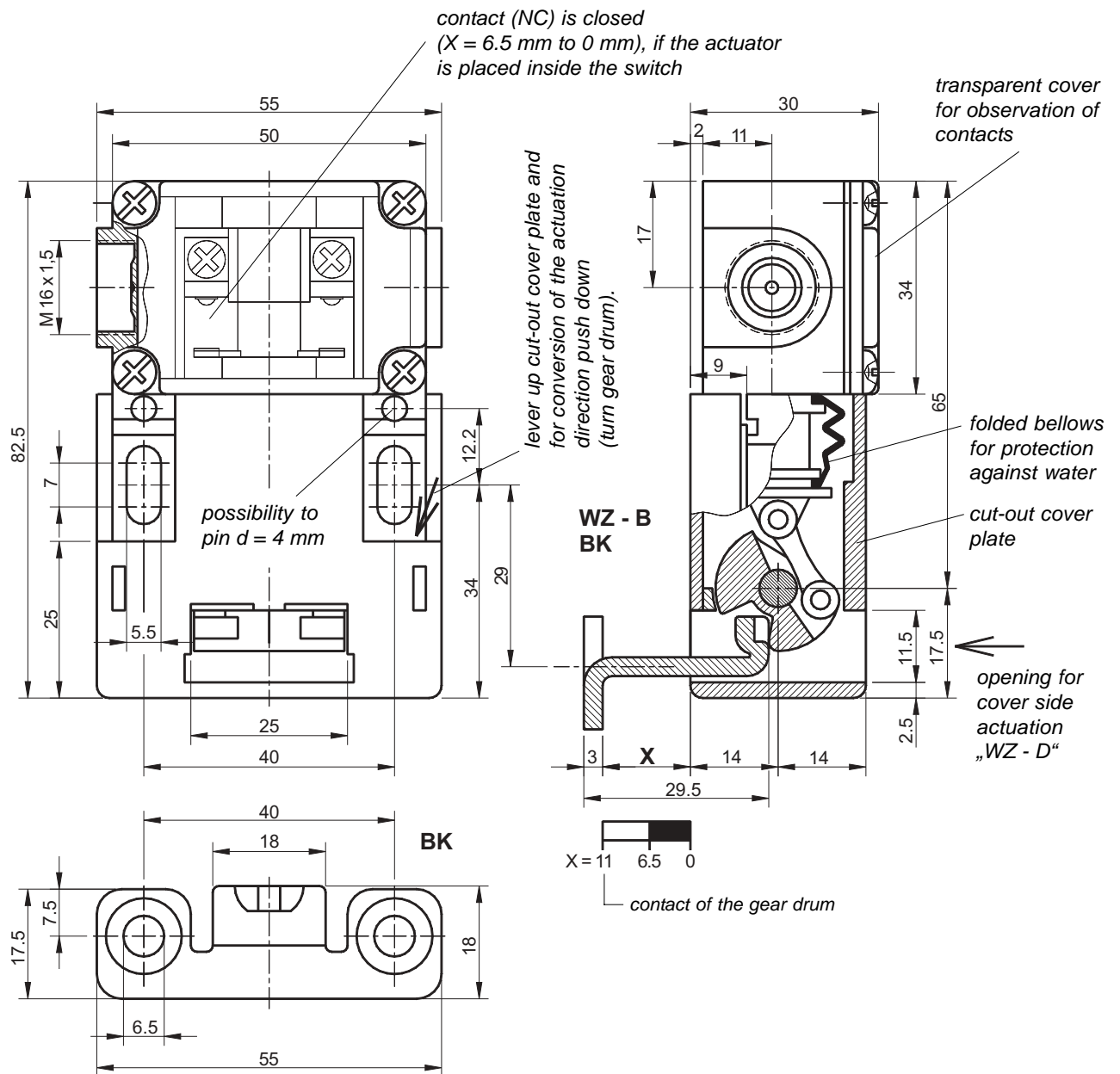
level of protection IP 66, protection insulated
especially robust (no filigreed parts)
large tolerance between contact-making to the stop of the actuator
actuator is ejected, if plugged in up to 3 mm before the stop only
pressure plates for secure fixation

Order Information Codes

WZ - B	safety switch, robust version, base side actuation
WZ - D	safety switch, robust version, cover side actuation
BK	actuator claw for safety switch WZ



Device Dimensions



Technical Data

EN 81-1 and EN 81-2

EN 60947-5-1

switching capacity

short-circuit capacity

enclosure

contacts

connection

ambient air temperature

actuation-/return force

weight

applies to the demands of the safety regulations for elevators

nominal insulation voltage 250 V $I_{th} = 10 \text{ A}$ $U_{imp} = 4 \text{ kV}$

AC-15 $I_e = 6 \text{ A}$ $U_e = 230 \text{ V}$ DC-13 $I_e = 2 \text{ A}$ $U_e = 200 \text{ V}$

T 10 A; F 16 A

level of protection IP 65, thermoplastic, self-extinguishing

positive contact with refined silver as contact material

by screw terminal max. 2.5 mm^2

cable entry $2 \times M 16 \times 1.5$

$-30 \text{ }^\circ\text{C}$ to $80 \text{ }^\circ\text{C}$, installation any operating position

13 N / 0 N

switch = 100 g actuator = 28 g